

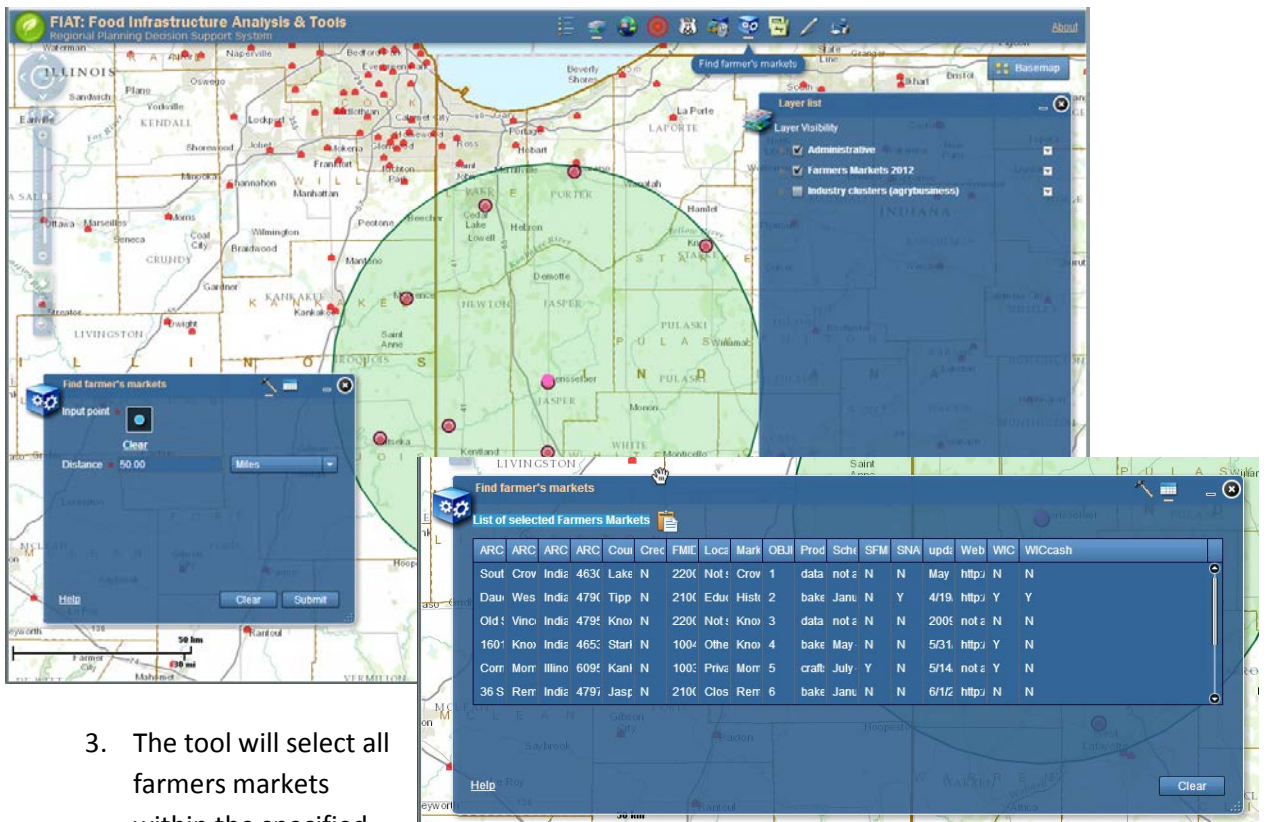
EXERCISE 6:

ANALYZING FARMERS MARKETS DATA

In this exercise you will learn to find out information about farmers markets which are becoming more and more important part of local and regional food infrastructure.

Step 1 : Find nearest Farmers markets by distance

1. Using navigation tools, navigate to Indiana and further to the city of Rensselaer, in north western Indiana.
2. Open “Find farmers markets” tool from top tool menu. Activate input point in popup window (click on point icon next to “Input point”), choose the search radius distance and click on the map near the city of Rensselaer.

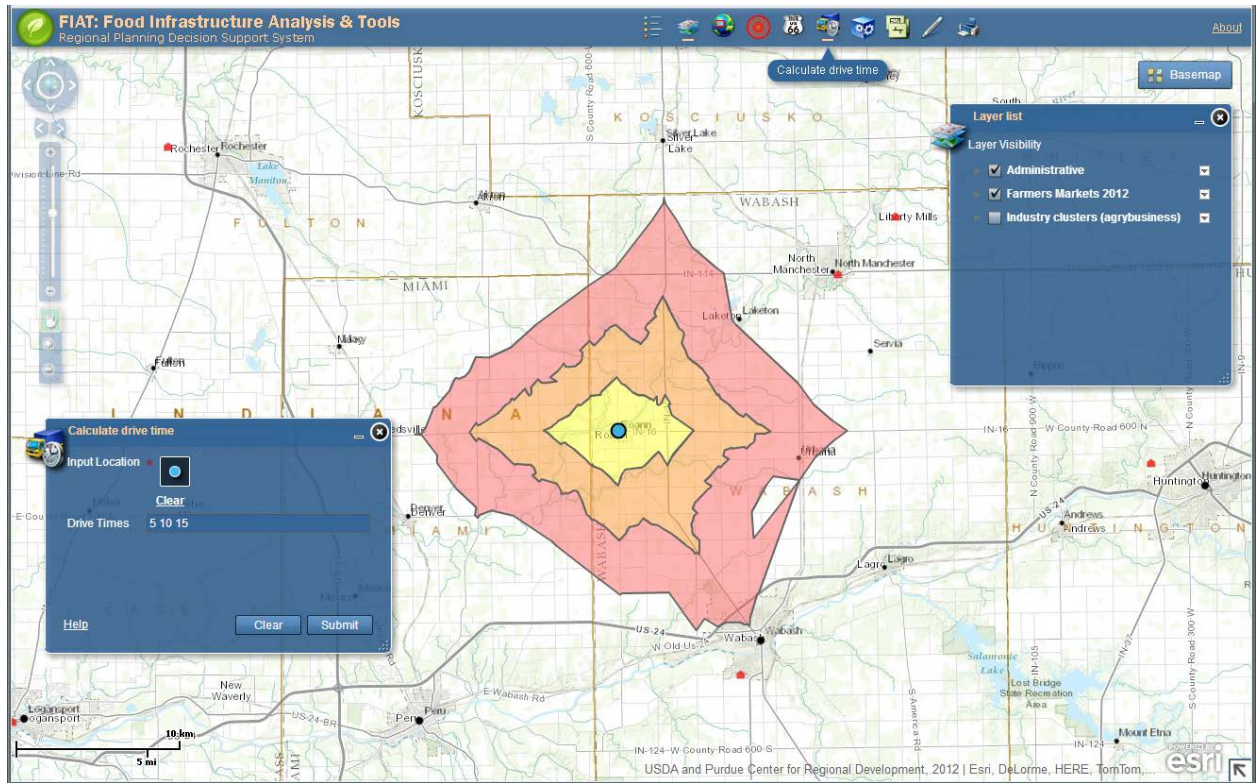


3. The tool will select all farmers markets within the specified distance and output the list of markets as a table. Copy the table to a clipboard by clicking on the icon next to “List of selected Farmers Markets” and paste it into Excel file. Now you can look at information about those markets.

Q1. Please save an Excel table into a file.

Step 2 : Find nearest farmers markets by driving time

1. Navigate to the city of Crown Point, open *Calculate Drive time* tool and click in the center of the city. The tool will calculate 5, 10 and 15 min drive areas and display them on the map.



Q2. How many markets and at what driving distance from Crown Point you can find?

Please send your answer and Excel file to Andrey at azhalnin@purdue.edu

THANK YOU!